

NEW!

KPR-FAST \varnothing 12

KPS-FAST \varnothing 12

FRAME PLUG \varnothing 12mm WITH:



HEX & TORX HEAD SCREW:

KPR-FAST K



TORX COUNTERSUNK
HEAD SCREW:

KPS-FAST S



ETA-12/0272

ETAG 020

A B C D

watch
video



wkrmet.com/frameplugs

THREAD REDUCTION

- precision drive of the screw
- greater expansion force in the second expansion zone

100% ^{pure material} nylon

100% secure
fixing

360mm length
up to



NEW!

KPR-FAST \varnothing 12

KPS-FAST \varnothing 12



RESISTANCE

Substrate	Description	Density [kg/dm ³]	Standard	Characteristic pull-out resistance [kN]
	concrete C12/15	≥1,8	EN 206-1	3,5*
	concrete ≥C16/20	≥2,3	EN 206-1	5,0*
	clay brick	≥1,7	EN 771-1	3,5
	clay brick (np. MZ Rd 2,0/20)	≥2,0	EN 771-1	3,5
	calcium silicate brick (np. Kalksandstein KS NF 20-2.0 Vollstein - DIN 106)	≥2,0	EN 771-2	3,5
	calcium silicate hollow block (np. Kalksandstein KS L-R(P) 8 DF Lochstein - DIN 106)	≥1,6	EN 771-2	3,0
	perforated ceramic brick (np. Hlz Rd1 1,2/12)	≥1,2	EN 771-1	2,0
	HBL 2/0.8	≥0,8	EN 771-2	2,0
	autoclaved aerated concrete AAC2	≥0,35	EN 771-4	0,75
	autoclaved aerated concrete AAC7	≥0,65	EN 771-4	3,0

* RESISTANCE FOR CRACK CONCRETE



KPR-FAST K ϕ 12 FRAME PLUG WITH HEX & TORX HEAD SCREW

NEW!



APPLICATION

For facade fixing of wooden members, battens and cover trims, steel profiles in cavity brick walls.

SUBSTRATE



INSTALLATION DATA

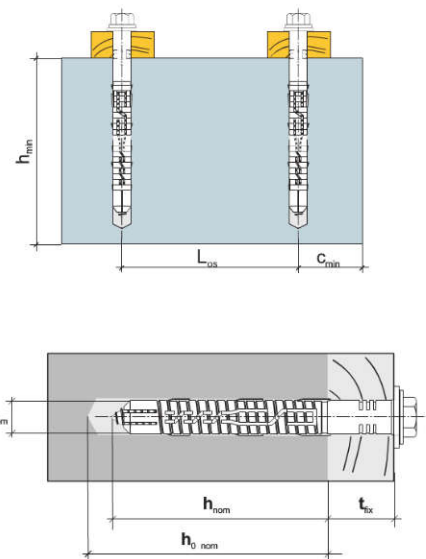
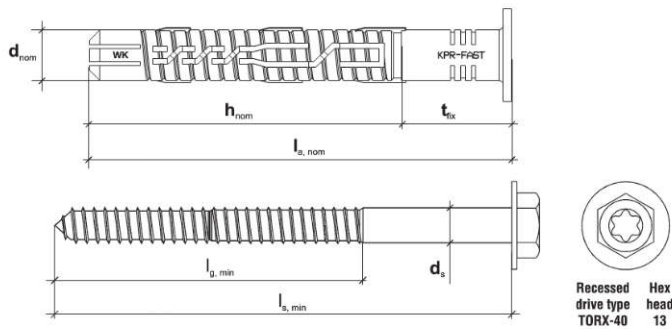
Substrate	Minimum edge distance c_{min} (mm)	Min. member thickness h_{min} (mm)
concrete C20/25	60	100
clay brick,	100	120
calcium silicate brick	100	120
hollow masonry	100	250
AAC	100	250

SPECIFICATIONS

Plug material	NYLON
Screw material	steel
Corrosion protection	zinc

RESISTANCE

Check out - page 33



TECHNICAL DATA

Code and size	Recessed drive type	Hex head	Drill hole diameter d_{nom} [mm]	Plug length l_s [mm]	Screw diameter and length $d_s \times l_s$ [mm]	Minimum depth of drilled hole h_{nom} [mm]	Minimum anchorage depth h_{nom} [mm]	Maximum fixture thickness t_{fx} [mm]
KPR-FAST-12080K	TORX40	13	12	80	8,0 x 85	80	70	10
KPR-FAST-12100K	TORX40	13	12	100	8,0 x 105	80	70	30
KPR-FAST-12120K	TORX40	13	12	120	8,0 x 125	80	70	50
KPR-FAST-12140K	TORX40	13	12	140	8,0 x 145	80	70	70
KPR-FAST-12160K	TORX40	13	12	160	8,0 x 165	80	70	90
KPR-FAST-12180K	TORX40	13	12	180	8,0 x 185	80	70	110
KPR-FAST-12200K	TORX40	13	12	200	8,0 x 205	80	70	130
KPR-FAST-12230K	TORX40	13	12	230	8,0 x 235	80	70	160
KPR-FAST-12260K	TORX40	13	12	260	8,0 x 265	80	70	190
KPR-FAST-12300K	TORX40	13	12	300	8,0 x 305	80	70	220
KPR-FAST-12330K	TORX40	13	12	330	8,0 x 335	80	70	250
KPR-FAST-12360K	TORX40	13	12	360	8,0 x 365	80	70	280